

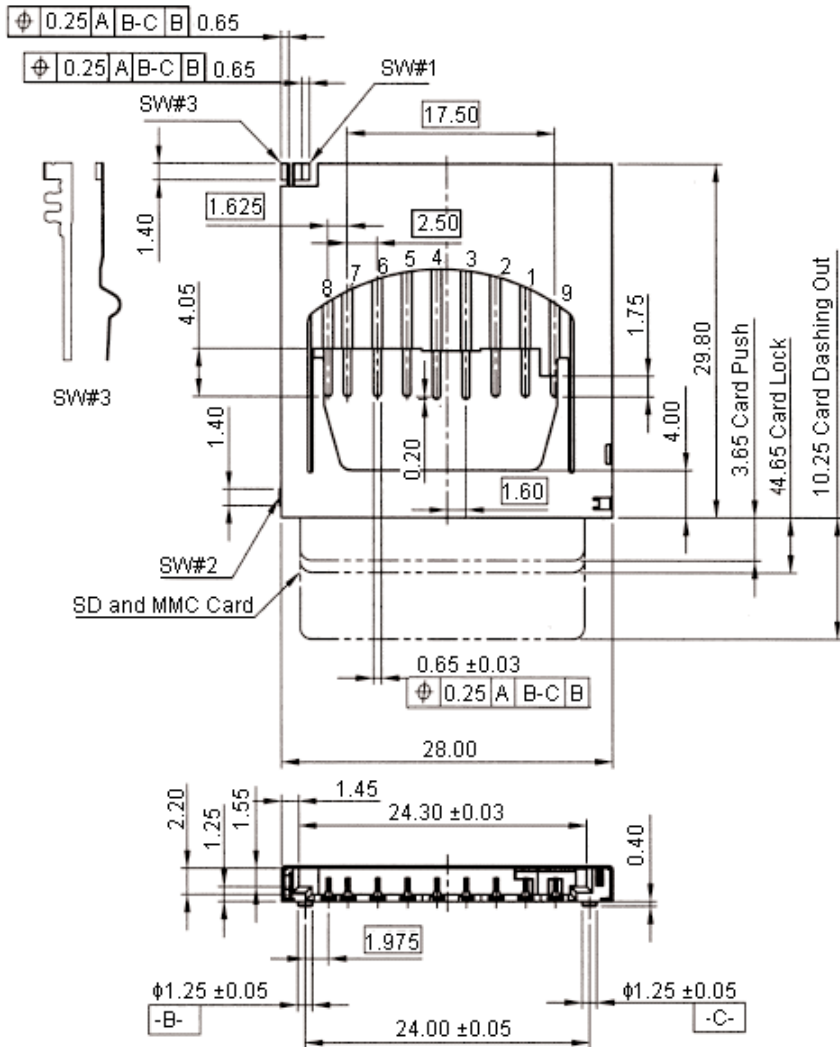


PART NO.

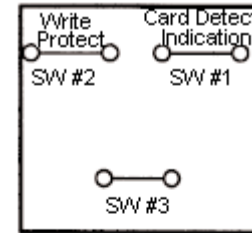
SDBMF-00915B0T2

REVISIONS

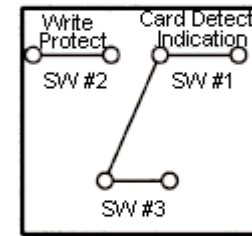
ECN #	REV	DESCRIPTION	DRAWN	DATE	CHECKD	DATE	APPRVD	DATE
-	A	RELEASED	Veena	16/04/09	Suresh	16/04/09	Farnell	30/04/09



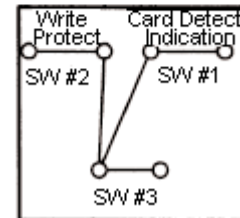
Dimensions : Millimetres



Without Card



Card Inserted
Write Protect : Lock



Card Inserted
Write Protect : Unlock

This data sheet and its contents (the "Information") belong to the Premier Farnell Group (the "Group") or are licensed to it. No licence is granted for the use of it other than for information purposes in connection with the products to which it relates. No licence of any intellectual property rights is granted. The Information is subject to change without notice and replaces all data sheets previously supplied. The Information supplied is believed to be accurate but the Group assumes no responsibility for its accuracy or completeness, any error in or omission from it or for any use made of it. Users of this data sheet should check for themselves the Information and the suitability of the products for their purpose and not make any assumptions based on information included or omitted. Liability for loss or damage resulting from any reliance on the Information or use of it (including liability resulting from negligence or where the Group was aware of the possibility of such loss or damage arising) is excluded. This will not operate to limit or restrict the Group's liability for death or personal injury resulting from its negligence. SPC MULTICOMP is the registered trademark of the Group. © Premier Farnell plc 2009.

TOLERANCES:

UNLESS OTHERWISE SPECIFIED, DIMENSIONS ARE FOR REFERENCE PURPOSES ONLY.

DRAWN BY:

Veena

CHECKED BY:

Suresh

APPROVED BY:

Farnell

DATE:

16/04/09

DATE:

16/04/09

DATE:

30/04/09

DRAWING TITLE:

SD Memory Card Push-Push W/Connector

SIZE

A

DWG NO.

M10002119

ELECTRONIC FILE

74273_DWG

REV

A

SCALE: NTS

U.O.M.: mm

SHEET: 1 OF 3

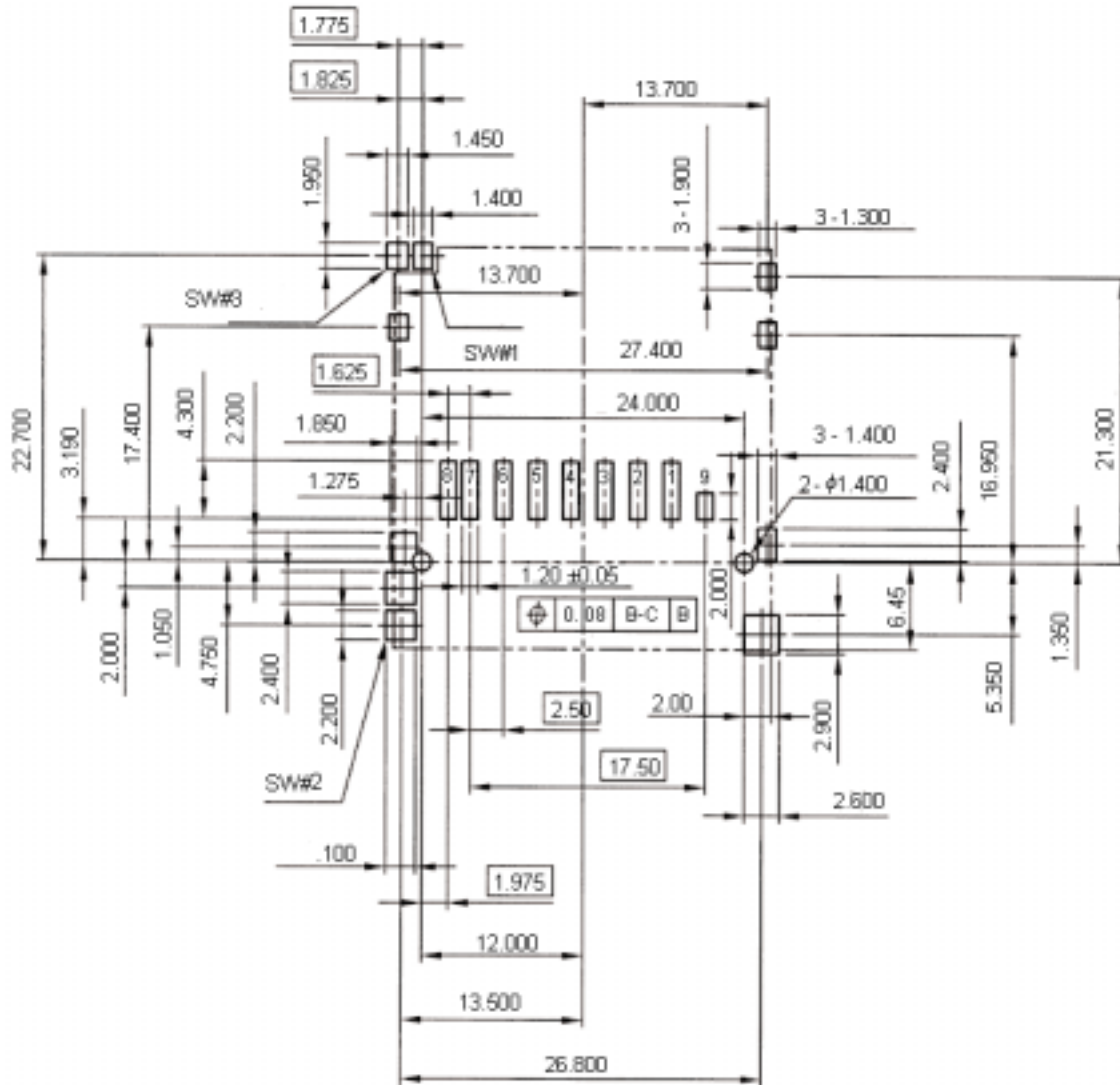


PART NO.

SDBMF-00915B0T2

REVISIONS

ECN #	REV	DESCRIPTION	DRAWN	DATE	CHECKD	DATE	APPRVD	DATE
-	A	RELEASED	Veena	16/04/09	Suresh	16/04/09	Farnell	30/04/09



Dimensions : Millimetres

This data sheet and its contents (the "Information") belong to the Premier Farnell Group (the "Group") or are licensed to it. No licence is granted for the use of it other than for information purposes in connection with the products to which it relates. No licence of any intellectual property rights is granted. The Information is subject to change without notice and replaces all data sheets previously supplied. The Information supplied is believed to be accurate but the Group assumes no responsibility for its accuracy or completeness, any error in or omission from it or for any use made of it. Users of this data sheet should check for themselves the Information and the suitability of the products for their purpose and not make any assumptions based on information included or omitted. Liability for loss or damage resulting from any reliance on the Information or use of it (including liability resulting from negligence or where the Group was aware of the possibility of such loss or damage arising) is excluded. This will not operate to limit or restrict the Group's liability for death or personal injury resulting from its negligence. SPC MULTICOMP is the registered trademark of the Group. © Premier Farnell plc 2009.

TOLERANCES:
UNLESS OTHERWISE SPECIFIED, DIMENSIONS ARE FOR REFERENCE PURPOSES ONLY.

DRAWN BY:	DATE:
Veena	16/04/09
CHECKED BY:	DATE:
Suresh	16/04/09
APPROVED BY:	DATE:
Farnell	30/04/09

DRAWING TITLE:			
SD Memory Card Push-Push W/Connector			
SIZE	DWG NO.	ELECTRONIC FILE	REV
A	M10002119	74273_DWG	A
SCALE: NTS		U.O.M.: mm	SHEET: 2 OF 3



PART NO.

SDBMF-00915B0T2

REVISIONS

ECN #	REV	DESCRIPTION	DRAWN	DATE	CHECKD	DATE	APPRVD	DATE
-	A	RELEASED	Veena	16/04/09	Suresh	16/04/09	Farnell	30/04/09

SD Card PIN Assignment

PIN	Name
1	CD/DAT3
2	CMD/D1
3	VSS1
4	VDD
5	CLK/SCLK
6	VSS2
7	DAT0
8	DAT1
9	DAT2

Part Number Table

Description	Part Number
Card, SD, Push/Push	SDBMF-00915B0T2

Part Number Explanation:



Contact Area Plating : 15 = 15µ Inches Gold Plating.
Package Type : 0 = Tray.
Plating Type : T = Lead Free.

<http://www.farnell.com>
<http://www.newark.com>
<http://www.cpc.co.uk>

This data sheet and its contents (the "Information") belong to the Premier Farnell Group (the "Group") or are licensed to it. No licence is granted for the use of it other than for information purposes in connection with the products to which it relates. No licence of any intellectual property rights is granted. The Information is subject to change without notice and replaces all data sheets previously supplied. The Information supplied is believed to be accurate but the Group assumes no responsibility for its accuracy or completeness, any error in or omission from it or for any use made of it. Users of this data sheet should check for themselves the Information and the suitability of the products for their purpose and not make any assumptions based on information included or omitted. Liability for loss or damage resulting from any reliance on the Information or use of it (including liability resulting from negligence or where the Group was aware of the possibility of such loss or damage arising) is excluded. This will not operate to limit or restrict the Group's liability for death or personal injury resulting from its negligence. SPC MULTICOMP is the registered trademark of the Group. © Premier Farnell plc 2009.

TOLERANCES:
 UNLESS OTHERWISE SPECIFIED, DIMENSIONS ARE FOR REFERENCE PURPOSES ONLY.

DRAWN BY:	DATE:
Veena	16/04/09
CHECKED BY:	DATE:
Suresh	16/04/09
APPROVED BY:	DATE:
Farnell	30/04/09

DRAWING TITLE:			
SD Memory Card Push-Push W/Connector			
SIZE	DWG NO.	ELECTRONIC FILE	REV
A	M10002119	74273_DWG	A
SCALE: NTS	U.O.M.: mm	SHEET: 3 OF 3	